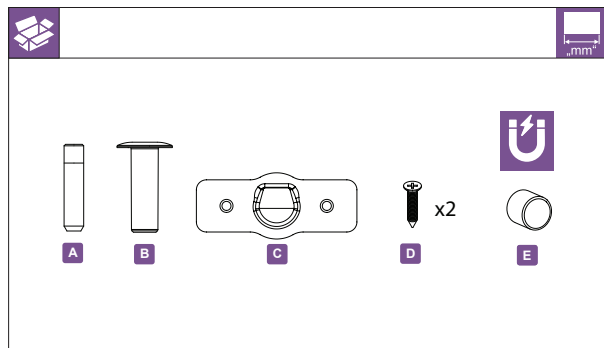
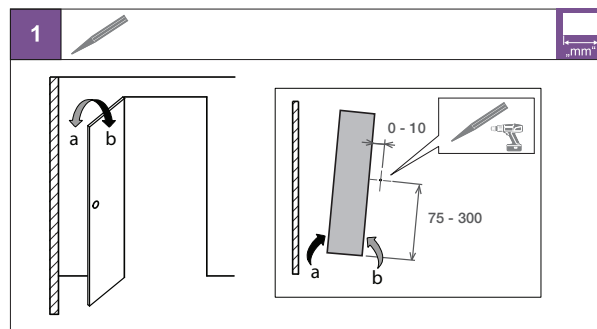




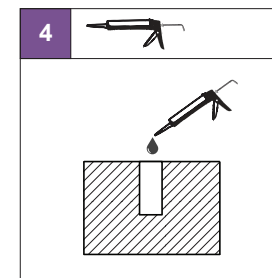
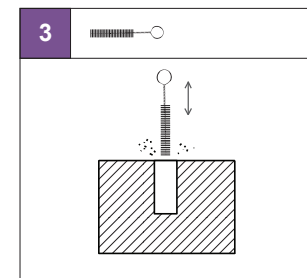
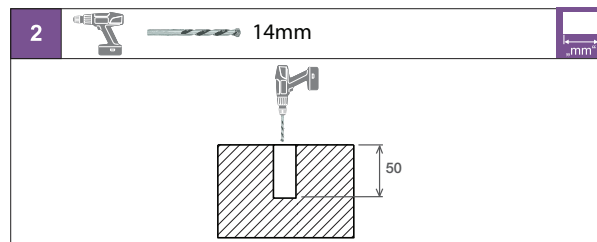
MAGNETIC DOOR STOP INSTALLATION MANUAL



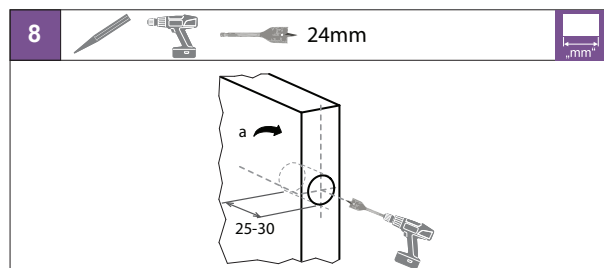
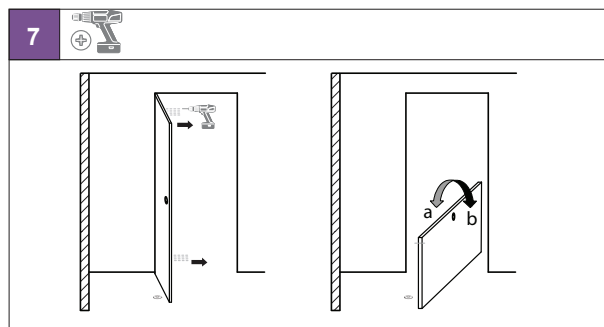
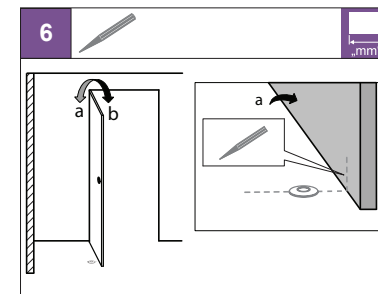
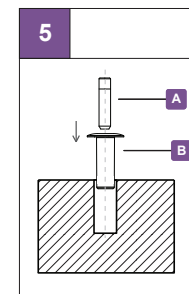
1



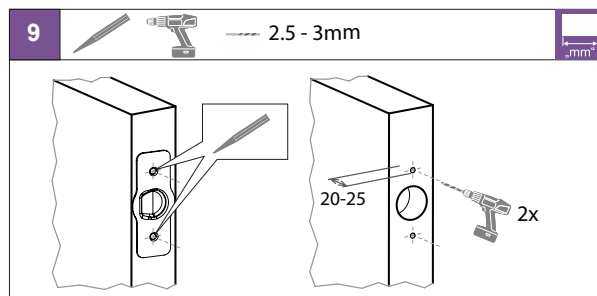
2



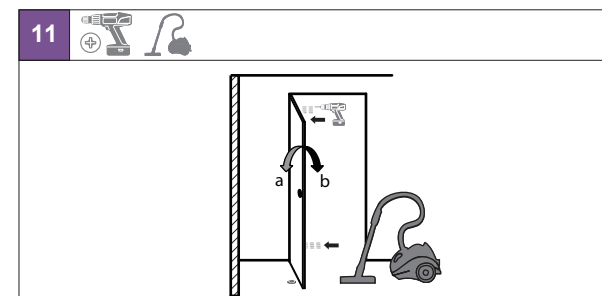
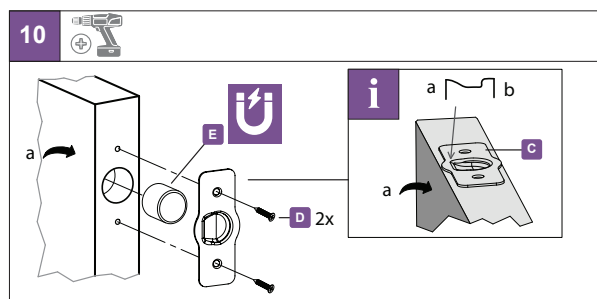
3



4



5



IMPORTANT INFORMATION

1. Product contains a powerful magnet. Avoid contact with metal foreign bodies prior to installation. Keep well clear of electronics and electrical equipment.
2. Carefully read installation Instructions prior to installation. Installing contrary to these instructions risks damage to your floors and door.
3. The maximum recommended door gap for the Fantom Doorstop is 15mm. If your doors are already installed and the gap exceeds 15mm, you can purchase one of our 5mm packers. The packer will bring down the striker plate by 5mm.
Carpeted surfaces: Allow sufficient clearance of carpet thread and pile when drilling hole into floor to avoid wrapping or binding to drill bit.
Tiled surfaces: It is recommended to use a diamond coated drill bit to avoid chipping and damage of tiles.

6